

PART OF THE E.1/2, OF SECTION 32, T.7N., R.1W., S.L.B. & M.
THE RANCHES SUBDIVISION PHASE 1

142

TAXING UNIT: 433

IN NORTH OGDEN CITY

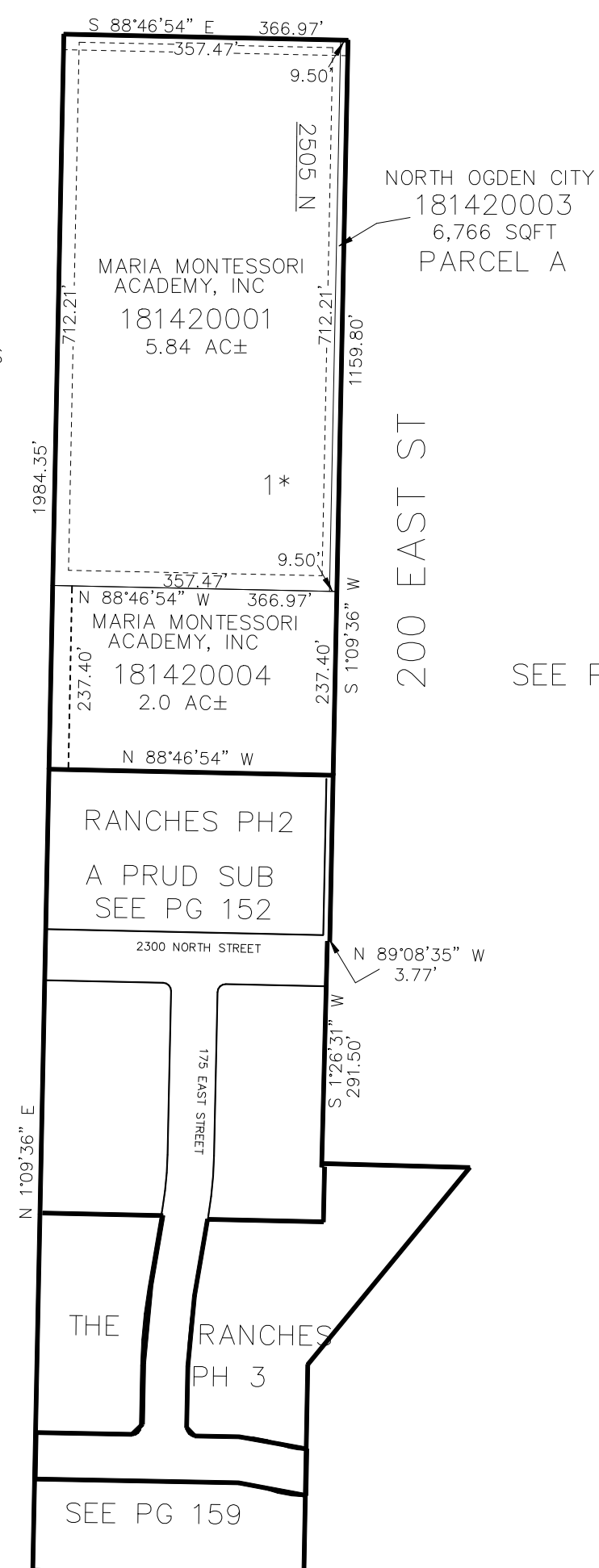
SCALE 1" = 200'

SEE PAGE 56

2550 SOUTH ST ?

*FOR ALL OTHER EASEMENTS
SEE DED. PLAT

SEE PAGE 56



SEE PAGE 56

SEE BOOK 17,
PAGE 68

10' UTILITY & DRAINAGE EASEMENTS EACH
SIDE OF PROPERTY LINES AS INDICATED
BY DASHED LINES EXCEPT AS OTHERWISE
SHOWN.

FOR COMPLETE ENG DATA SEE
ORIGINAL DEDICATION PLAT IN
BOOK 71, PAGE 33 OF RECORDS.